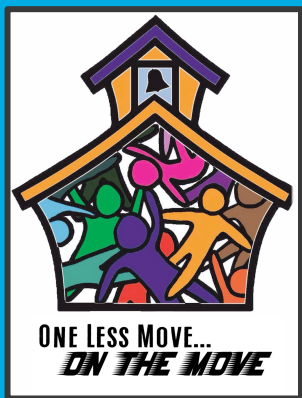
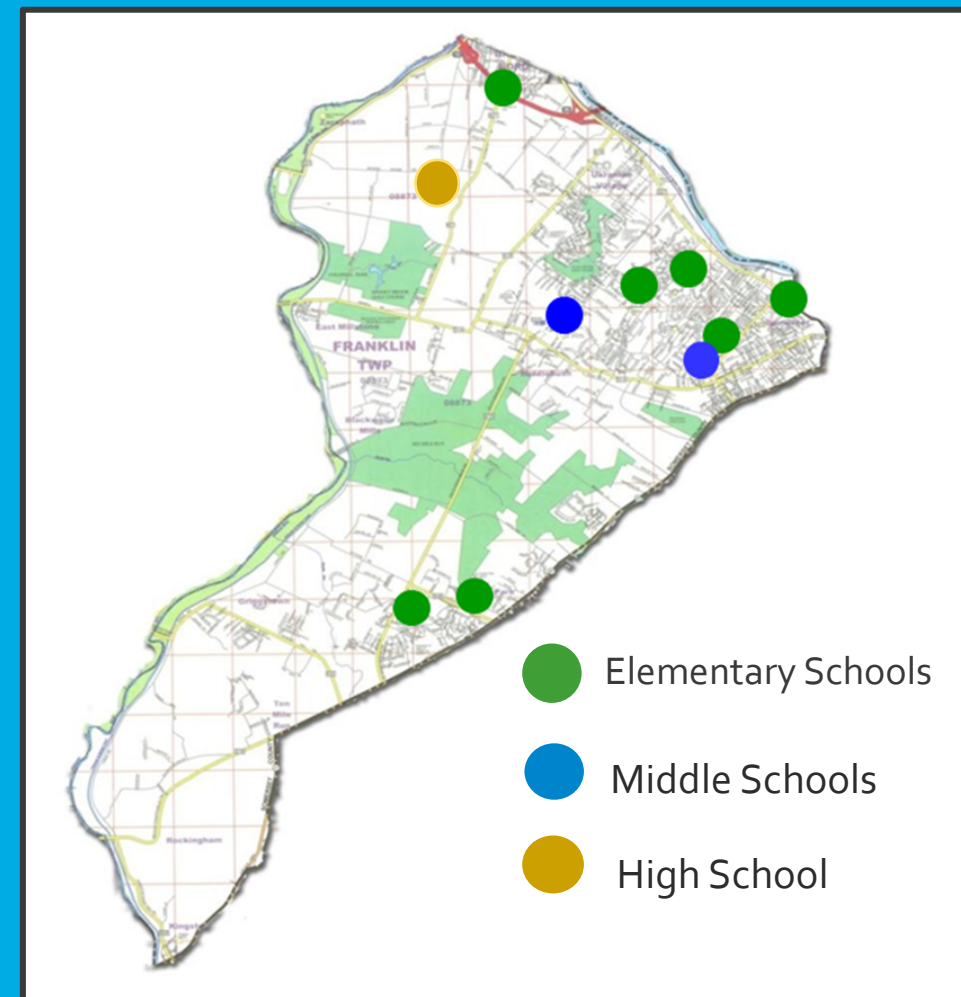


FRANKLIN TOWNSHIP PUBLIC SCHOOLS

Attendance Area Rezoning Plan



Special Workshop Meeting of the
Franklin Township Board of Education –
May 16, 2017



ONE LESS MOVE REFERENDUM GOAL

To Provide a Better Educational Experience for Our 5th and 6th Graders
By Reducing the Number of Times Students Change Schools
Through Grade Reconfiguration

- 5th Graders are developmentally similar to elementary
- 6th graders are developmentally similar to 7th/8th graders
- Two programs in same building does not provide the most effective learning environments
- Two year programs at SGS and FMS do not provide adequate time or physical environment to:
 - *develop an appropriate culture, instill Middle School core values, support age-appropriate programs during critical time in early adolescent development*



5th Graders Remain in an Elementary School Building
6th Graders Attend One Middle School on Two Campuses

GRADE RECONFIGURATION AND ATTENDANCE AREA REZONING

Claremont Road Elementary School Attendance Zone Created

Attendance Zones for Two Middle School Campuses Created

Goals:

- minimize reassignment of 5th grade students to new schools
- increase transportation efficiency
- eliminate overcrowding
- consider demographic balance

Constants:

- all students grades pre-k through five will be provided transportation
- transportation to childcare facilities will remain available to facilities within each schools attendance area

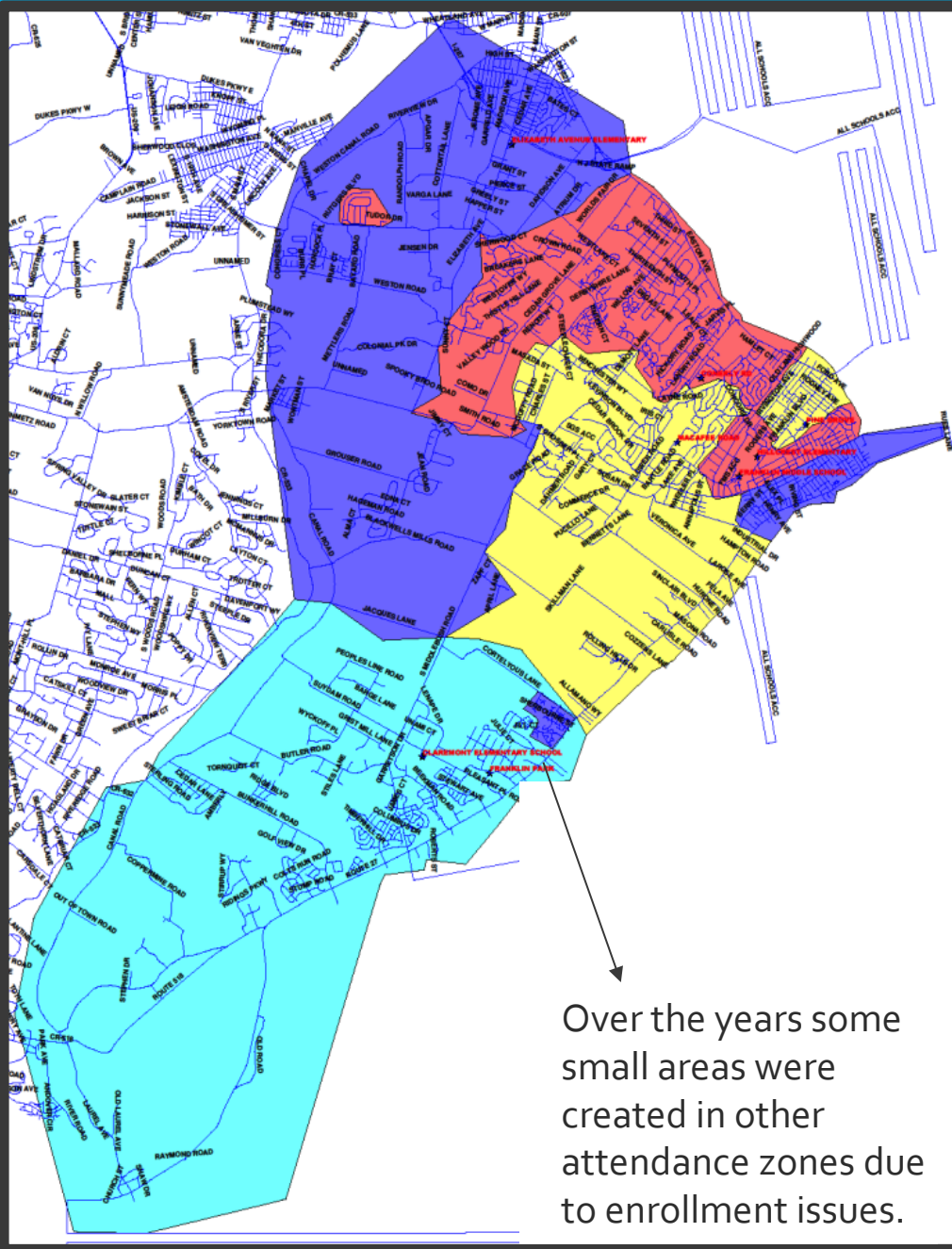
CURRENT ATTENDANCE AREAS

Elizabeth Avenue School

Conerly Road School
Hillcrest School

MacAfee Road School
Pine Grove Manor School

Franklin Park School



Over the years some small areas were created in other attendance zones due to enrollment issues.

Our four smaller elementary buildings operate as “sister” schools.

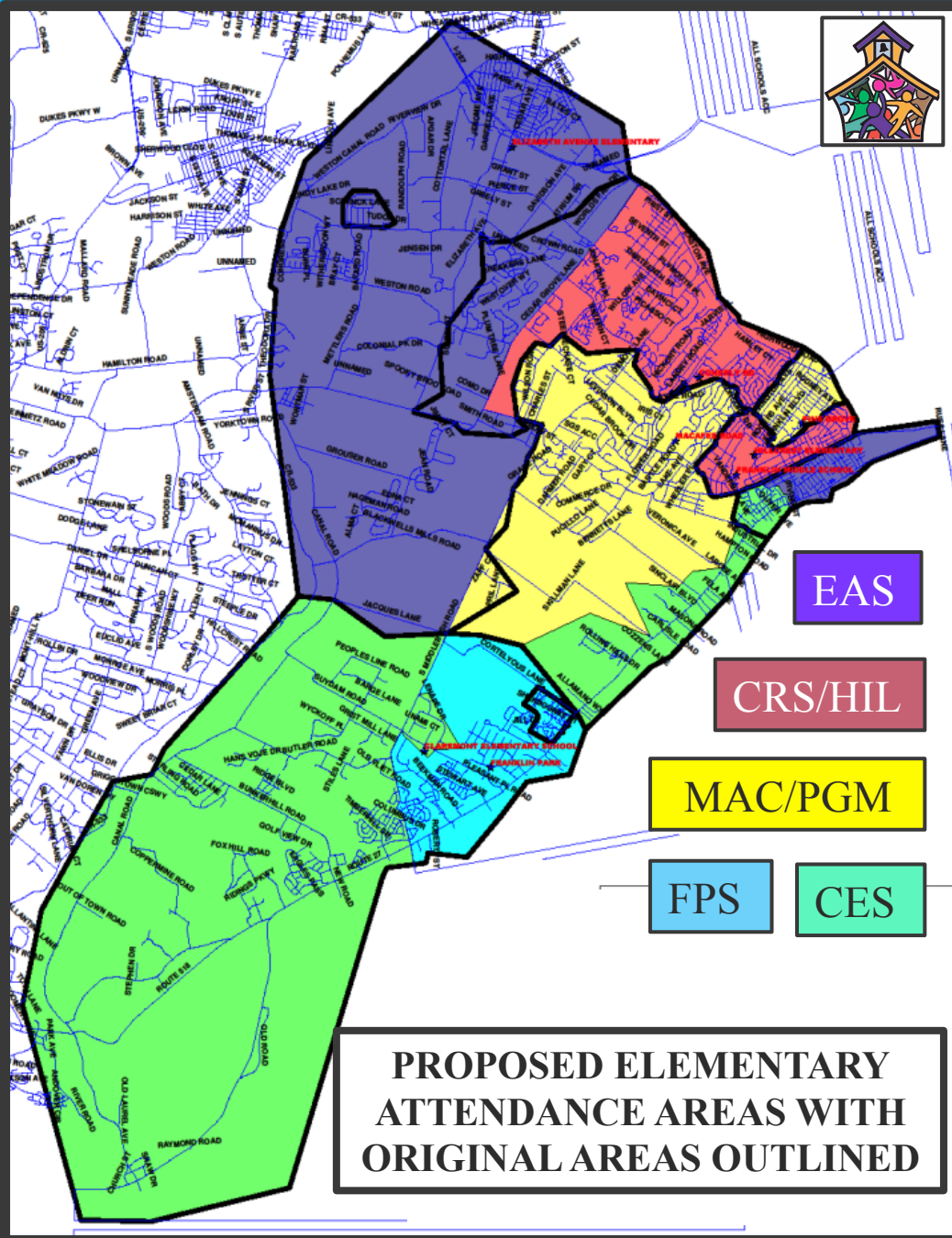
- Conerly Road and Hillcrest School are “sister” schools.
- MacAfee Road and Pine Grove Manor are “sister” schools.

“Sister” schools are serviced by bus routes that travel in the same areas. This allows for flexibility at registration.

When a child registers in the school district he/she may be assigned to either of the “sister” schools.

This assignment is based upon availability of seats in the particular grade.

MINIMIZE REASSIGNMENT OF STUDENTS TO NEW SCHOOLS



Claremont Road Elementary School Attendance Area includes:

- students from the South/West portion of the existing FPS attendance area
- students along the Route 27 corridor of the existing MAC/PGM and EAS attendance areas

Franklin Park School Attendance Area now includes:

- students near Sherbourne St. formerly attending EAS

Elizabeth Avenue School Attendance Area now includes:

- students on West side of Cedar Grove Lane formerly in the CRS/HIL attendance area
- small area of students near Schneck Ln./Tutor Dr. formerly in the CRS/HIL attendance area

MacAfee Road/Pine Grove Manor Attendance Area now includes:

- small area of students on the East side of South Middlebush Rd. formerly in the EAS attendance area

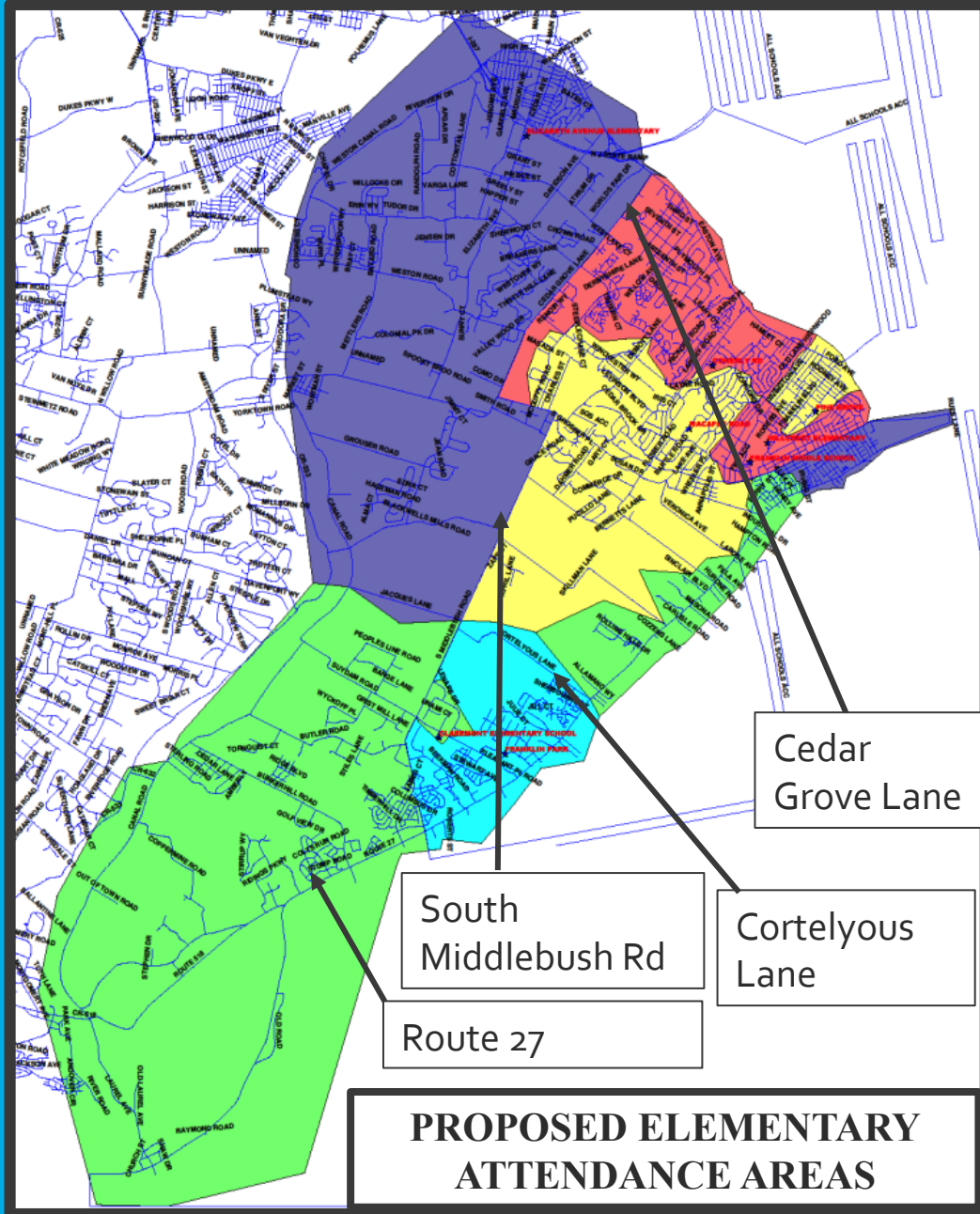
INCREASE TRANSPORTATION EFFICIENCY

Student “ride time” will be improved

Major roadways are used as boundary lines

Small attendance areas created over the years are incorporated into new larger attendance areas

“Sister” schools remain intact



**Elizabeth Avenue
School**

**Conerly Road School
Hillcrest School**

**Claremont Road
Elementary School**

**MacAfee Road School
Pine Grove Manor School**

Franklin Park School



ENROLLMENT FOR PROPOSED ELEMENTARY ATTENDANCE AREAS

Grade Attendance Area	Pre-K	K	1 st	2 nd	3 rd	4 th	5 th	Total	Capacity	% of Capacity
CRS/HIL	63	129	132	114	121	157	143	859	919	93%
MAC/PGM	37	91	101	89	95	98	99	610	771	79%
EAS	43	85	75	81	106	101	91	582	674	86%
FPS	53	97	91	91	97	101	68	598	669	89%
CES	47	118	108	97	111	111	110	702	900	78%
Total	243	520	507	472	530	568	511	3351	3933	85%

Buildings are below capacity.

Numbers may be adjusted to reflect Special Programs (Special Ed./ESL/Bilingual Services) held in specific buildings.

ONE MIDDLE SCHOOL ON TWO CAMPUSES



Franklin Middle School
@ the FMS Campus



Franklin Middle School
@ the SGS Campus

ONE **FRANKLIN**
MIDDLE SCHOOL

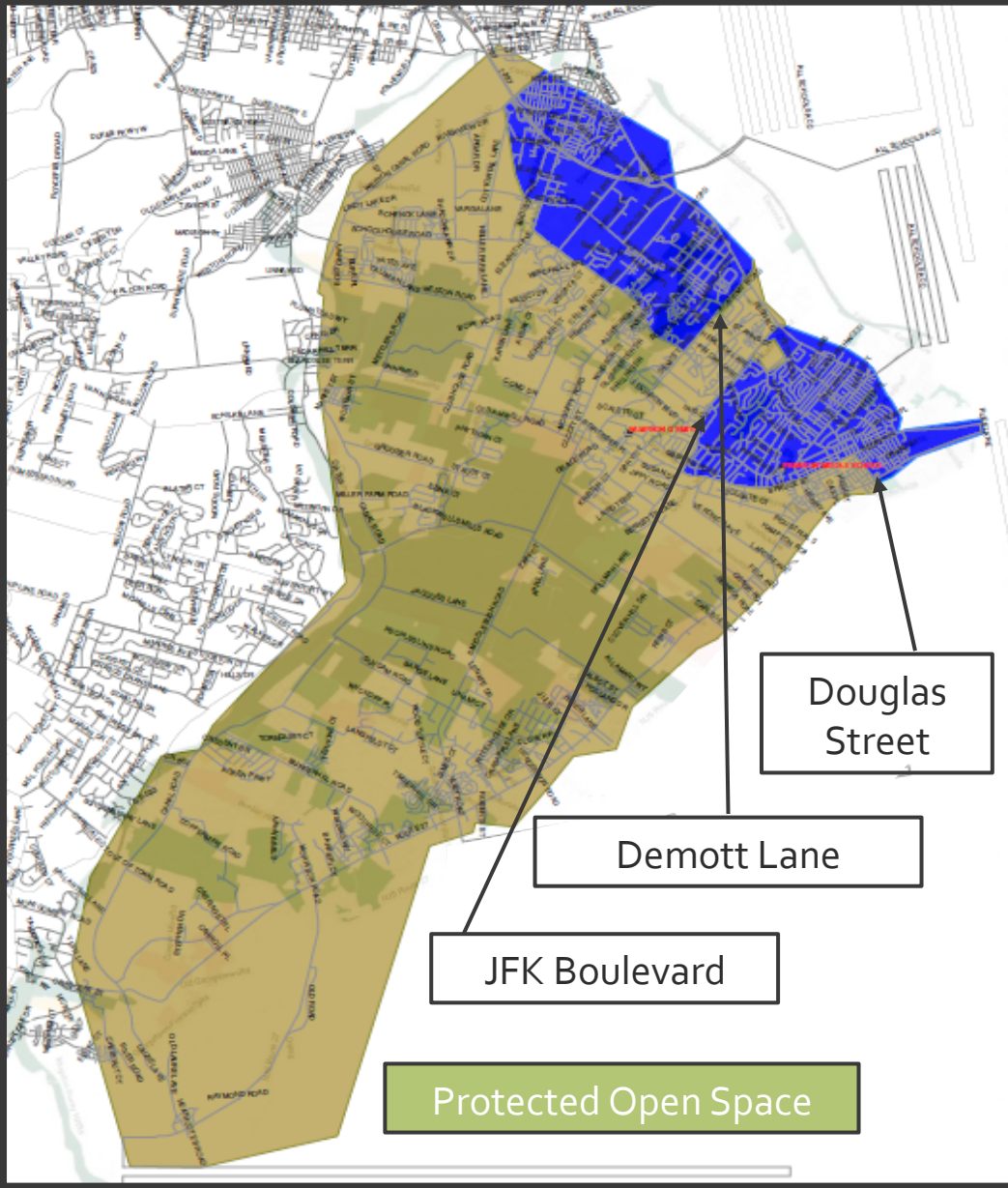
Both campuses will service grades six through eight

Both campuses will have the same school hours

Students from either campus may participate in extra curricular activities and athletics

Facility work in progress to increase “parity” between the facilities

PROPOSED MIDDLE SCHOOL ATTENDANCE AREAS



ONE MIDDLE SCHOOL ON TWO CAMPUSES

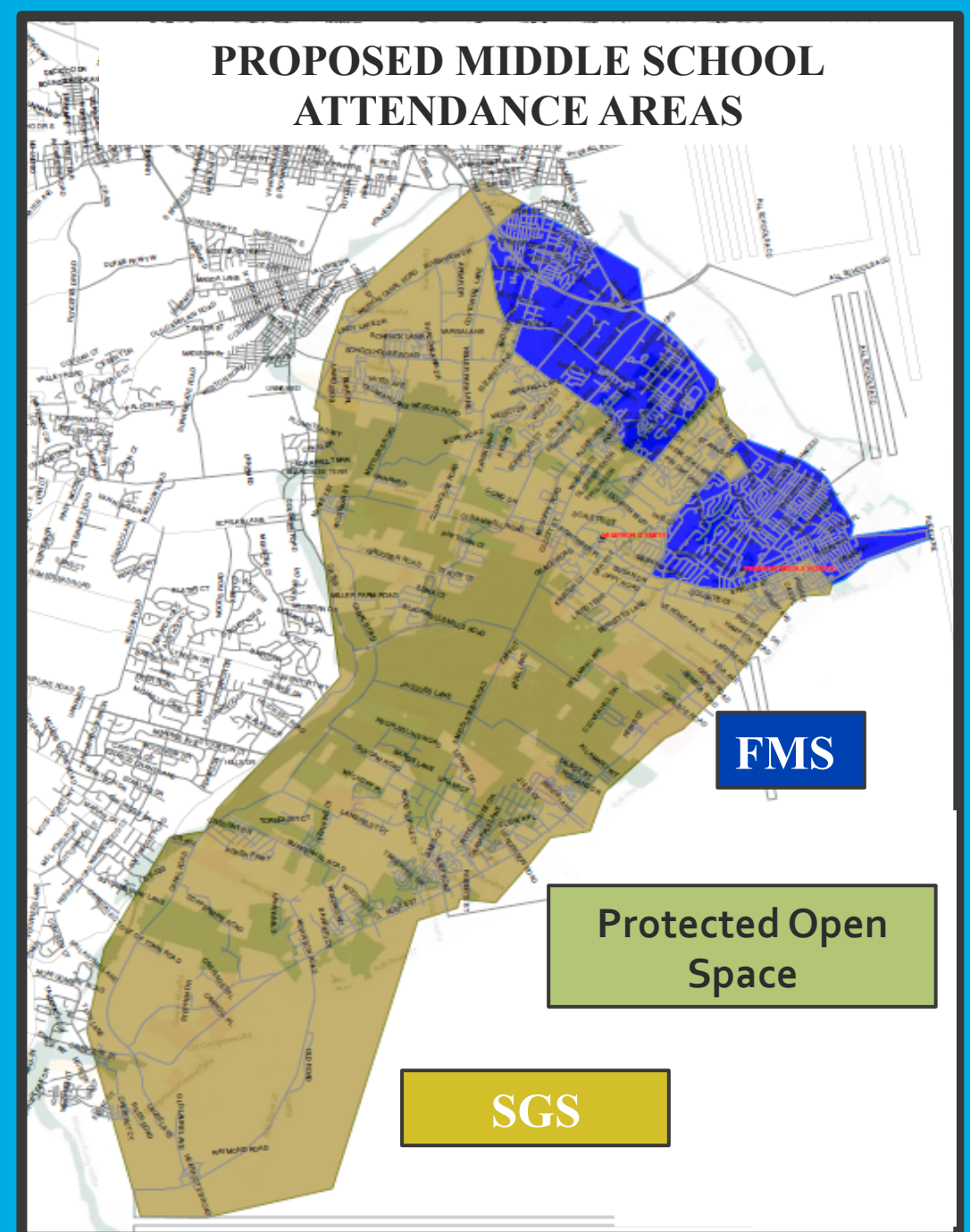
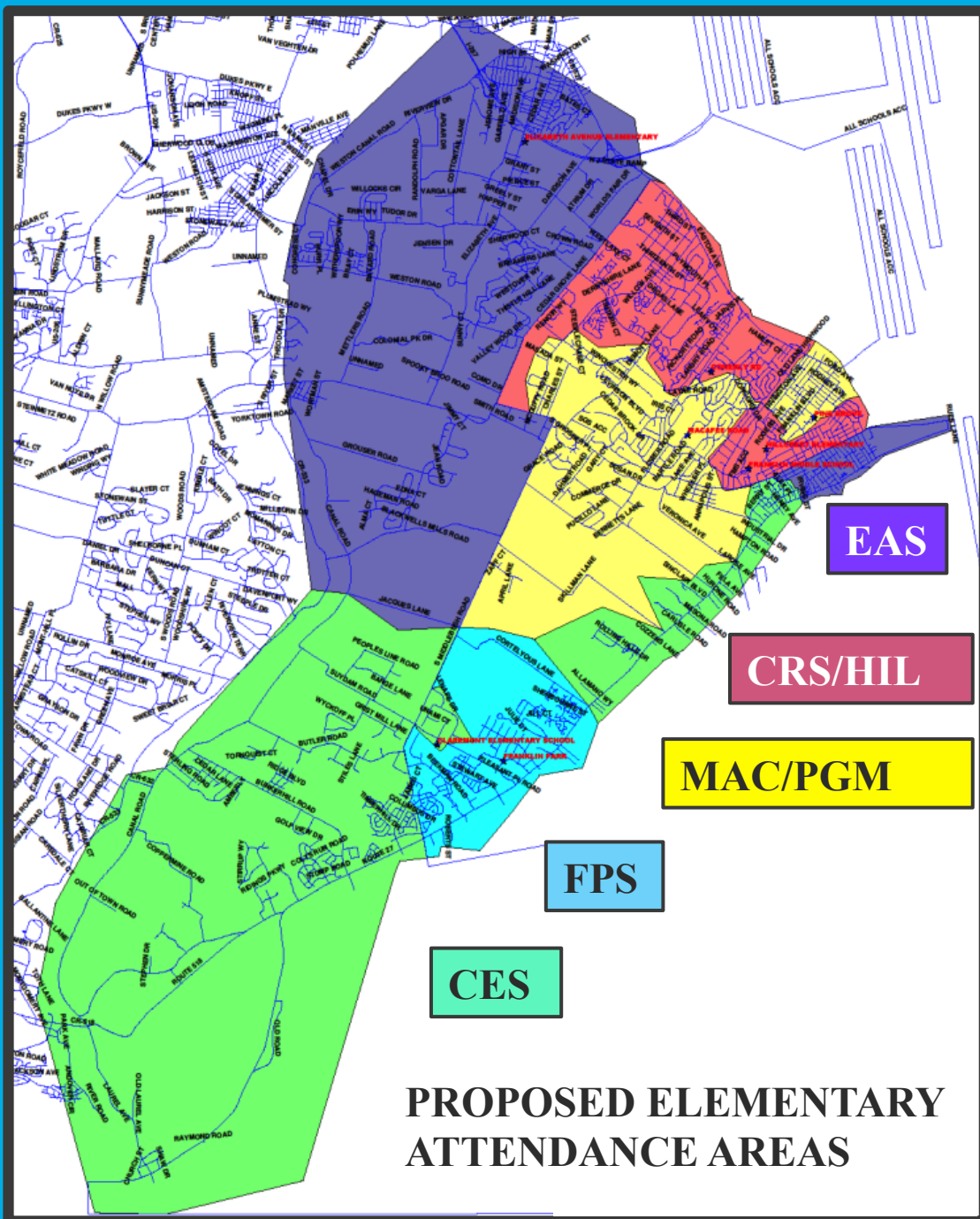
Franklin Middle School campus attendance area retains established “walk zones”

Sampson G. Smith campus attendance area includes less densely populated areas in the southern portion of the Township as well as large portions of non residential space

Sampson G. Smith campus will house the Bilingual/ESL Program

Taking into account size of school building – both campuses below enrollment capacity

Grade Campus Attendance Area	6 th	7 th	8 th	Total
Franklin Middle School Campus	235	223	246	704
Sampson G. Smith School Campus	272	264	299	835
Total	507	487	545	1539



GRADE RECONFIGURATION AND ATTENDANCE AREA REZONING

Goals Achieved:

- ✓ minimize reassignment of 5th grade students to new schools
- ✓ increase transportation efficiency
- ✓ eliminate overcrowding
- ✓ consider demographic balance

Next Stop:

- BOE approval of the rezoning plan by June, 2017

